

## Genotyping of the $\kappa$ - casein gene by PCR – RFLP (*AcuI* digestion) and its relationship to milk yield traits in Anatolian buffaloes, Murrah buffaloes, and their crosses

Orhan KARADAĞ<sup>1\*</sup>, Vasfiye KADER ESEN<sup>2</sup>, Mehmet Akif YÜKSEL<sup>2</sup>, Mustafa KÜÇÜKKKEBABÇI<sup>3</sup>, Semih SEVİM<sup>4</sup>, İlky ÇETİN<sup>2</sup>, Binnur KAPTAN<sup>5</sup>, Mehmet İhsan SOYSAL<sup>6</sup>

<sup>1</sup>Department of Animal Production and Technologies, Faculty of Applied Sciences, Muş Alparslan University, Muş, Turkey

<sup>2</sup>Sheep Breeding Research Institute, Balıkesir, Turkey

<sup>3</sup>Karabük Directorate of Provincial Agriculture and Forestry, Republic of Turkey Ministry of Agriculture and Forestry, Karabük, Turkey

<sup>4</sup>Aydın Directorate of Provincial Agriculture and Forestry, Republic of Turkey Ministry of Agriculture and Forestry, Bozdoğan, Aydın, Turkey

<sup>5</sup>Department of Food Engineering, Faculty of Agriculture, Namık Kemal University, Tekirdağ, Turkey

<sup>6</sup>Department of Animal Science, Faculty of Agriculture, Namık Kemal University, Tekirdağ, Turkey

Received: 04.07.2022

Accepted/Published Online: 08.01.2023

Final Version: 10.02.2023

**Abstract:** The aim of this study was to investigate the polymorphism of the  $\kappa$  - casein gene (*kappa casein*, CSN3) in buffaloes and determine its effects on milk yield traits. Data were obtained from 2016 to 2019 from all animals in the ongoing Anatolian Buffalo Breeding Project. Genomic DNA was collected from a total of 209 buffaloes of different ages and sexes, namely 31 Murrah, 46 Anatolian buffaloes, and 132 of their crosses (Murrah  $\times$  Anatolian). Genotyping of CSN3 gene by polymerase chain reaction–restriction fragment length polymorphism (PCR – RFLP) technique with restriction enzyme (*AcuI*) revealed three genotypes: AA (0.689), AB (0.282), and BB (0.028), and the frequencies of A and B alleles were 0.83 and 0.17, respectively. A total of 113 milk yield data and 74 milk component analyses of dairy buffaloes were used to compare CSN3 genotypes for milk yield traits. Statistical analysis showed that there was a significant difference in lactation milk yield between CSN3 genotypes: BB, 1560.3  $\pm$  326.7 kg, AB, 1278.1  $\pm$  111.3 kg, and AA, 1060.9  $\pm$  85.6 kg ( $p < 0.05$ ). However, the mean values of lactation length and milk components were not significant between genotypes ( $p > 0.05$ ). These results suggest that these variations (135<sup>ThrACC / IleATC</sup> / 136<sup>ThrACC / ThrACT</sup>) in the buffalo CSN3 gene may be used as genetic markers in dairy buffalo breeding programs.

**Key words:** Buffalo, milk yield, genetic polymorphism, kappa casein

### 1. Introduction

Domestic buffalo (*Bubalus bubalis*) is mainly native to Southeast Asian countries (India, Pakistan, and China), with 95% of the world's buffalo population living on this continent. Of the remaining population, 2.9% live in Africa, 0.02% in Europe, and 1.9% in the Americas [1]. The buffalo is a livestock that occurs mainly in tropical and subtropical countries with hot and humid climates and contributes significantly to global milk production at a lower cost than cattle.

The Anatolian buffalo, the only native water buffalo breed in Turkey, has evolved from the Mediterranean water buffalo, which is a subgroup of the Asian river buffalo and is found in most regions of the country [2]. The Murrah buffalo, known for its high milk yield and adaptability to environmental conditions, originated in Rohtak and Haryana and has spread to other parts of India and other countries [3].

In livestock production, it is important to increase milk yield and ensure that the composition of milk is as desirable as possible. Since milk components and milk yield are directly related, variations in genes thought to affect milk yield are studied to improve milk quality and quantity. Selection methods can be more easily determined when yield-related genes are used as markers, and breeding goals can be achieved more quickly by using these genes.

Because 80% of milk proteins are caseins, most studies of milk performance traits in livestock focus on casein genes. The protein content of buffalo milk is the same as in other animal species and consists of caseins (CN),  $\beta$  - lactoglobulin ( $\beta$  - LG), and  $\alpha$  - lactoalbumin ( $\alpha$  - LA). There are four types of casein in milk:  $\alpha$ 1 - casein ( $\alpha$ 1 - CN),  $\alpha$ 2 - casein ( $\alpha$ 2 - CN),  $\beta$  - casein ( $\beta$  - CN), and  $\kappa$  - casein ( $\kappa$  - CN). Each of these caseins is encoded by the CSN1S1, CSN1S2, CSN2, and CSN3 genes, respectively [4, 5].

\* Correspondence: o.karadag@alparslan.edu.tr

It has been reported that 11 different types of  $\kappa$  - CN exist in cattle (*A, B, B2, C, D, E, F1, F2, G1, G2, H, I, J*), with alleles *A* and *B* being the most common [6]. The *CSN3* gene of buffaloes is located on chromosome 7 and consists of five exons. It highlights the role that genetic markers play in milk production traits in dairy breeds and can be used in breeding. It is responsible for about 12% of the total casein in buffalo milk. Therefore, the polymorphism of *CSN3* gene encoding  $\kappa$ -casein protein is of particular importance [4 -7]. A similar study was conducted in buffaloes in response to *CSN3* gene variations detected in cattle. A significant association was found between the *B* allele and milk yield and protein content [8]. In addition, the *B* allele was reported to be more abundant in buffaloes than in cattle, resulting in higher efficiency in the production of butter and cheese from buffalo milk [9]. As a result of these alleles, codons 136 and 148 in *CSN3* are altered, 136<sup>ThrACC/148<sup>AspGAT</sup></sup> in the *A* allele, 136<sup>IleATC/148<sup>AlaGCT</sup></sup> in the *B* allele, and the genotype *BB* produced more cheese and required less time to rennet than the genotype *AA* in buffaloes [10, 11]. Some studies have reported the effects of *CSN1S1* and *CSN3* genes on milk yield and coagulation. Allelic combinations of *CSN1S1* and *CSN3* genes have been investigated for their effects on milk yield, milk composition, and coagulation traits, and differences between *CSN1S1* - *CSN3* composite genotypes in milk yield, milk composition, and coagulation traits were found [12, 13].

Different breeds of buffaloes from different countries were investigated for polymorphisms of the *CSN3* gene. The exon 4 region of *CSN3* in Bulgarian Murrah buffaloes was amplified and directly sequenced, and two SNPs were found [11]. Similar results were also obtained for exon 4 in Italian and Indian buffaloes [12, 14]. In Egyptian buffaloes, a region of 453 base pairs on exon 4 was examined by sequence analysis and found to contain two SNPs causing silent mutations in the peptide regions 135<sup>ThrACC/ IleATC</sup> and 136<sup>ThrACC/ ACT</sup>. By RFLP with the other enzyme *AcuI*, three different genotypes were detected in the same region. Two SNPs are responsible for this difference, with the *A* allele causing a change in 135<sup>ThrACC/136<sup>ThrACT</sup></sup>, while the *B* allele causes a change in 135<sup>IleATC/136<sup>ThrACT</sup></sup> [7, 15-17]. According to a study on the effects of this variation in Egyptian buffaloes, the *B* allele has a significant effect on total milk yield and milk composition [16].

Direct sequencing analysis of the *CSN3* CDS region of river and swamp buffalo in China revealed 5 amino acid changes, but only one was effective (135<sup>Thr/Ile</sup>) [8]. *CSN3* in buffaloes is usually analyzed with restriction enzymes, which have also been shown to be effective in cattle. In native Indian buffalo breeds (South Kanara, Surti, Murrah), the restriction enzyme *HinfI* was used to digest 350 bp of the 4<sup>th</sup> exon of *CSN3*. Based on RFLP results, all samples

showed the homozygous genotype *BB*, and this region was monomorphic [8]. Using different restriction enzymes such as *AluI* and *HindIII*, 400 and 280 bp of the same exon were analyzed in 115 lactating Murrah buffaloes, and all individuals belonging to the *BB* genotype were found to be monomorphic [18]. A PCR-RFLP analysis using *HinfI* and *HaeIII* restriction enzymes was performed in Anatolian buffaloes to analyze exon 4 and intron 4 (350 bp), resulting in monomorphic results [19, 20]. Similarly, all samples showed monomorphic results after amplification of a 556-bp region containing *CSN3* STS (*CSN3* sequence-tagged sites) and *HindIII* digests. However, sequence analysis of this region revealed a substitution in codon 135<sup>ThrACC/IleATC</sup> in some samples [21]. Another study in Anatolian buffaloes revealed that exon 4 was monomorphic after *HinfI* and *HindIII* digests and that the genotypes *AB* and *BB* were detected after *HindIII* enzyme digests of exon 4 and intron 5 [22]. Moreover, many studies in Iranian and Pakistani buffaloes have shown similar monomorphic results when *HinfI* enzyme was digested in the exon 4 region [23-25]. Despite the digestion of 350 bp of *HinfI* enzyme, both *BB* and *AB* genotypes were found, and polymorphic structure in this region was detected in Indian river buffaloes [26]. When *CSN3* exon 4 was digested by *HindIII* in native Egyptian buffalo and cattle, the genotypes *AA* and *AB* were found in both species, with cattle having a high frequency (0.630) for the *A* allele and buffalo having a high frequency (0.875) for *B* allele [9].

The *CSN3* polymorphism was previously studied in cattle and buffalo, and the results of this study show that the restriction enzymes *AluI*, *HaeIII*, *HinfI*, and *HindIII* and *CSN3* genotyping were successful in cattle, whereas monomorphic results were obtained in buffalo. This is due to the fact that the restriction sites for the *A* and *B* alleles are different in the two species [7]. Previous studies using PCR-RFLP in Anatolian buffaloes have shown that the exon 4 region of the *CSN3* gene is monomorphic with the *HinfI*, *HindIII*, and *HaeIII* restriction enzymes [19-22]. Therefore, the aim of this study was to determine buffaloes with a different restriction enzyme (*AcuI*/PCR-RFLP) in exon 4 of *CSN3* gene and relate it to milk yield traits.

## 2. Materials and methods

### 2.1. Animal material

All purebred and crossbred buffalo breeds of the “National Anatolian Buffalo Breeding Project” at Bandırma Sheep Research Institute were used for the study. A total of 209 buffaloes of different ages (1 month to 16 years) and sexes (57 males and 152 females), calves, heifers, young bulls, cows, and adult bulls were genotyped for the variation of *CSN3* gene. The number of genotyped purebred and crossbred buffaloes was determined to be 46 Anatolian buffaloes, 31 Murrah buffaloes, 50 F1, 48 G1, 30 G2, and 4 G3.

## 2.2. Feeding program for buffaloes

Throughout the facility, the entire herd is fed according to a feeding program that changes according to age and physiological phases. The group feeding program is calculated based on the daily milk yield of the dairy buffalo.

The buffalo's roughage needs are met at regular intervals from a variety of sources. Vetch hay and barley straw form the basis of the roughage source. In the fall and winter, corn silage is also fed. A mixture of sunflower seed meal, barley, and wheat is used as a concentrate. The content of the ration for 500 kg live weight, without milk yield, is 14.2 energy (ME in MCAL), 3.7 (kg) of total digestible nutrients (TDN), and 364 (g) of total crude protein (CP).

## 2.3. Milk performance traits and milk component analysis

A total of 113 milk yield records of dairy buffaloes from 2016, 2017, and 2018 were collected for comparison of milk yield traits of *CSN3* genotypes (83 AA, 28 AB, and 2 BB). Daily milk yield records (morning and evening) were used to determine the total milk yield and length of lactation period of buffaloes. To compare milk constituents (fat, nonfat dry matter, protein, lactose, minerals, density, and freezing point) between *CSN3* genotypes, 74 milk constituent analyzes were performed on the same buffalo from 2016, 2017, and 2018 (56 AA, 16 AB, and 2 BB). Milk samples collected monthly were analyzed using a milk analyzer (Funke Gerber® Milk Analyzer).

## 2.4. Blood collection and DNA isolation

Blood was collected from the jugular vein into 10 mL K3-EDTA tubes (anticoagulant) with sterile disposable needles and stored at -20 °C. After thawing the frozen blood samples, DNA isolation was performed using a commercial kit (Macharey Nagel®), and a DNA quantification device was used to measure the extracted DNA density.

## 2.5. PCR-RFLP analysis

DNA was isolated from blood samples and verified by 2% gel electrophoresis. A 453 bp fragment of exon 4 of the *CSN3* gene was amplified using a T100™ thermal cycler with primers: F: 5'-TGTGCTGAGTAGGTATCCTAGTTATGG-3'; R: 5'-GCGTTGTCTTCTTTGATGTCTCCT - 3' [7]. The PCR mix contained: 12.5 µL 2X Taq Master Mix (Vivantis®), 1 µL MgCl<sub>2</sub> (3.5 mM), 1 µL Forward Primer (F), 1 µL Reverse Primer (R), 1 µL DNA sample, and 8.5 µL water (dd). The PCR cycle performed: Denaturation 2 min at 94 °C, 35 cycles at 94 °C 2 s, annealing 30 s at 63 °C, synthesis 30 s at 72 °C, and final extension 7 min at 72 °C. Amplicons were digested with *AcuI* restriction endonuclease enzyme (Thermo Scientific) for 30 min at 37 °C with the following mixture: 10 µL PCR product, 1 µL *AcuI* restriction enzyme, 2 µL 10X Fast Digest Buffer, 1.5 µL 20X SAM (0.2 mM), and added to 15.5 µL sterile distilled water for a total of 30 µL. After inactivation of

the enzyme at 65 °C for 5 min, the digested samples were separated on a 3.0% agarose gel, stained with Syber Safe DNA Stain, and imaged using a gel imaging device.

## 2.6. Statistical analysis

Allele and genotype frequencies were determined using Popgene 1.32 software [27] and Hardy-Weinberg equilibrium was determined using the chi-square ( $\chi^2$ ) test. *CSN3* genotypes were evaluated using the least squares means method (LSM) [28] for milk yield, lactation length, and milk component. The following statistical model was used for the analysis of milk yield traits;

$$Yijklm = \mu + ai + bj + ck + dl + dm + eijklm$$

Where;

*Yijklm*: vector of observed traits.

$\mu$ : Overall mean

*ai*: Fixed effect of genotype *CSN3* (*i*: AA, AB, and BB)

*bj*: Fixed effect of milking year (*j*: 2016, 2017, and 2018).

*ck*: Fixed effect of breed and crossbreed (*k*: A, M, F1, G1, G2, G3).

*dl*: Fixed effect of age (*l*: 3-10 years)

*dm*: Fixed effect of lactation number (*m*: 1-7)

*eijklm*: Residual error.

## 3. Results

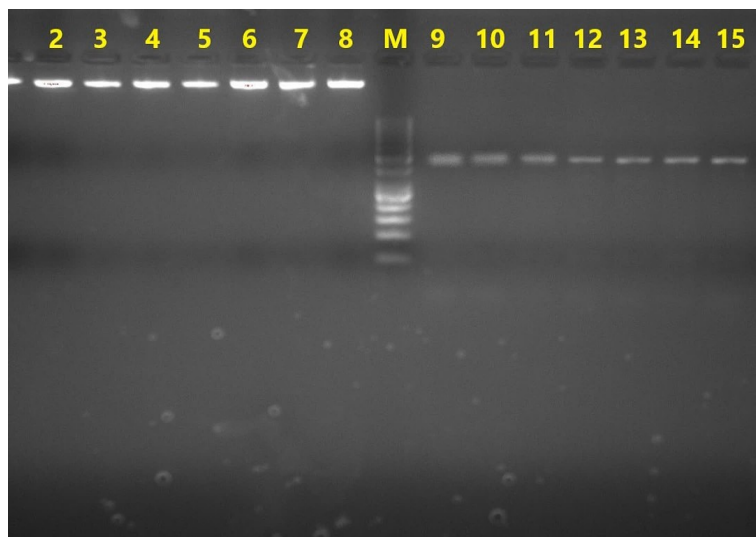
Figure 1 shows the gel electrophoresis image of the raw DNA samples obtained from 209 buffaloes. After digestion with *AcuI* restriction enzymes, RFLP analysis was performed to determine the length of the bands.

*CSN3* genotypes were determined from the band images and RFLP results shown in Figure 2. An uncut single band (453 bp) as AA, three bands (453, 339, and 114 bp) as AB, and two bands (339 and 114 bp) were described as BB genotypes.

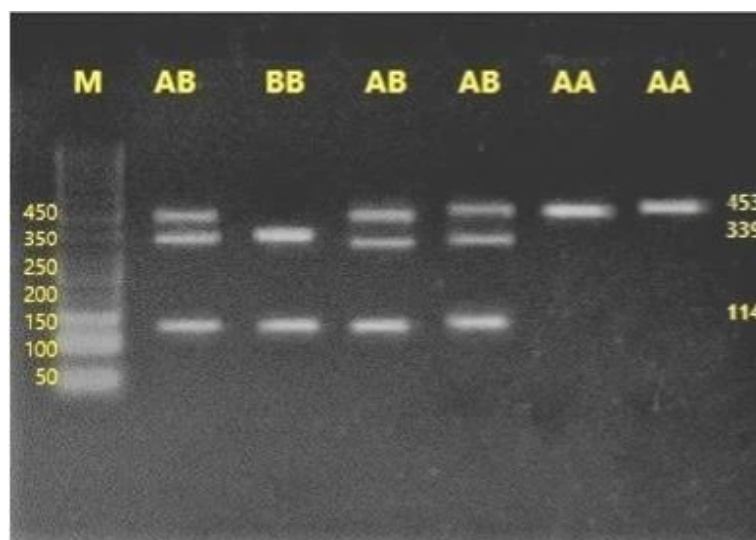
In the analysis of PCR-RFLP, the difference between A and B alleles is the presence of two SNPs previously reported (C/T). The A allele is 135<sup>ThrACC</sup>/136<sup>ThrACC</sup>, whereas the B allele is 135<sup>IleATC</sup>/136<sup>ThrACT</sup>. Accordingly, the presence of the B allele leads to amino acid substitutions [7].

Table 1 shows the detected genotypes in *CSN3*, alleles, and genotype frequencies of buffaloes and 146 AA, 55 AB, and 8 BB genotypes, with genotype frequencies of 0.69, 0.26, and 0.038, respectively. Based on the chi-square (1.0098) and P value (0.3139), the population is in Hardy-Weinberg equilibrium, because  $p > 0.05$ .

In Table 2, the comparison of lactation milk yield between genotypes was evaluated by multifactorial analysis of variance with LSM. The mean values of genotypes for lactation milk yield were obtained as follows: AA 1060.9 ± 85.6 kg, AB 1278.1 ± 111.3 kg, and BB 1560.3 ± 326.7 kg, with significant differences between means ( $p < 0.05$ ). Genotype BB had the highest milk yield, followed by genotypes AB and AA. LSM values for the lactation length



**Figure 1.** Gel image of buffalo genomic DNA (lanes: 1–8) and *CSN3* exon 4 PCR products 453 bp (lines 9–16), M: marker, 50 bp.



**Figure 2.** Gel image of buffalo *CSN3* exon 4 PCR-RFLP analysis with *AclI* enzyme genotypes; lines: 5 and 6 (*AA* genotype, 453 uncut fragment), line 4 (*BB* genotype, two bands: 339 and 114 bp) and lines 1, 3, and 5 (*AB* genotype, three bands: 453, 339 and 114 bp) M: marker 50 bp.

period were: *AA*  $249.9 \pm 13.8$  days, *AB*  $259.9 \pm 17.9$  days, and *BB*  $313.8 \pm 52.6$  days, but no significant differences between genotypes ( $p > 0.05$ ).

The *CSN3* genotypes of milk are shown in Table 3 with their LSMs for fat, nonfat dry matter, protein, lactose, density, freezing point (-), and minerals. There was no significant difference in milk components between genotypes ( $p > 0.05$ ).

#### 4. Discussion

An essential component of genetic progress is the identification and sustainable use of indigenous breeds. To improve sustainability, genes must be identified that affect economic efficiency traits important for food consumption, such as milk and meat. With the increase in molecular genetic studies, breeding programs are taking advantage of the quantitative trait loci identified. It is well

**Table 1.** Allele and genotype frequencies of buffalo CSN3 variants.

Breed	N	GF			AF		Exp. Homo.	Exp. Het.	$\chi^2$	P value
		AA	AB	BB	A	B				
A	46	0.696	0.282	0.021	0.837	0.163	0.7241	0.2729	0.0287	0.8655
M	31	0.645	0.258	0.097	0.774	0.226	0.6446	0.3554	2.4737	0.1157
F1	50	0.740	0.220	0.040	0.850	0.150	0.7424	0.2576	1.1306	0.2877
G1	48	0.646	0.333	0.021	0.813	0.187	0.6921	0.3079	0.3441	0.5575
G2	30	0.733	0.233	0.034	0.850	0.150	0.7407	0.2593	0.3342	0.5632
G3	4	1.000	0.000	0.000	1.000	0.000	1.0000	0.0000	–	–
Overall	209	0.699	0.263	0.038	0.830	0.170	0.7173	0.2827	1.0098	0.3149

GF: Genotype frequency, AF: Allele frequency, Exp. Homo.: Expected homozygosity, Exp. Het.: Expected heterozygosity, A: Anatolian buffalo, M: Murrah buffalo, F1, G1, G2, G3: Crosses (Murrah × Anatolian),  $\chi^2$ : Chi – square, P: Probability

**Table 2.** Least squares mean values of lactation milk yield and lactation length of buffalo CSN3 genotypes.

Trait/efficiency	Unit	LSM* ± SE			P-value
		AA (N = 83)	AB (N = 28)	BB (N = 2)	
Lactation milk yield	kg	1060.9 ± 85.6 <sup>b</sup>	1278.1 ± 111.3 <sup>a</sup>	1560.3 ± 326.7 <sup>ab</sup>	0.0445
Lactation length	days	249.9 ± 13.8	259.9 ± 17.9	313.8 ± 52.6	0.4104

LSM\*: Least Squares Means, SE: Standard error, P: Probability, <sup>a, b, ab</sup>: Differences in mean values, indicated by different letters in each row or column, are statistically significant.

**Table 3.** Least squares mean values of milk components of buffalo CSN3 genotypes.

Trait/efficiency	Unit	LSM* ± SE			P value
		AA (N = 56)	AB(N = 16)	BB(N = 2)	
Fat	%	7.06 ± 0.32	7.06 ± 0.38	5.68 ± 0.86	0.2373
Nonfat DM	%	10.67 ± 0.15	10.71 ± 0.18	10.24 ± 0.40	0.4895
Total protein	%	4.01 ± 0.05	3.99 ± 0.06	3.79 ± 0.13	0.2375
Lactose	%	5.93 ± 0.08	5.96 ± 0.09	5.66 ± 0.21	0.3440
Density	g/mL	1.02 ± 0.00	1.03 ± 0.00	1.02 ± 0.00	0.5792
Freezing point (-)	°C	0.42 ± 0.03	0.43 ± 0.04	0.43 ± 0.09	0.9010
Mineral	%	0.25 ± 0.02	0.27 ± 0.02	0.25 ± 0.05	0.7139

LSM\*: Least squares mean, SE: Standard error, P: Probability, DM: Dry matter

known that milk yield and quality are influenced by casein proteins, which account for 80% of milk proteins [29].

The  $\kappa$  – CN gene and its genetic polymorphisms, which are also the subject of this study, have been extensively studied in cattle and buffalo breeds in many geographic

regions because of their effects on milk yield and quality [22]. In the past, numerous studies have been conducted to determine how variations in CSN3 affect milk yield in cattle. In recent years, similar studies have been conducted in buffaloes, but there have been few studies correlating

CSN3 variations with milk yield traits. Therefore, this study is important because it contributes to further research on the CSN3 *B* allele in buffaloes.

In the present study, the CSN3 *B* allele and the genotypes *AA*, *AB*, and *BB*, identified by RFLP analysis of the buffalo exon 4 region (453 bp), also showed the presence of two SNPs (*C/T*) reported in some previous studies [7, 15–17].

In the present study, a Buffalo-specific *AcuI* enzyme restriction site (CTGAAGN16A) was detected in exon 4 of the CSN3 gene, as previously reported by El Nahas et al. [7]. As a result of RFLP analysis by digestion with *AcuI* enzyme, two different alleles (*A* and *B*) were detected in a 453 bp long region in CSN3 exon 4. According to the results of gel electrophoresis, the frequency of the *B* allele was lower (0.17), whereas the *A* allele had a higher frequency (0.83). The frequencies of the homozygous *AA*, heterozygous *AB*, and homozygous *BB* genotypes were 0.699, 0.263, and 0.038, respectively. In a study of Egyptian buffaloes, after *AcuI* digestion in a 453 bp region in CSN3 exon 4, allele frequencies *A* and *B* were 0.57 and 0.43, respectively, and genotype frequencies were *AA* 0.29, *AB* 0.65, and *BB* 0.06 [7]. In a similar study using the same method in Egyptian buffalo, allele frequencies of *A* and *B* were reported to be 0.58 and 0.42, respectively, and genotype frequencies were reported to be 17% for *AA* and 83% for *AB* [17].

The polymorphic structure detected in this study by *AcuI* digestion suggests that there are different CSN3 genotypes in this herd and that selection in this direction may be occurring. The differences between CSN3 genotypes in lactation milk yield were considerable, and it was found that there was a significant difference between buffaloes with the *B* allele and buffaloes with the *A* allele. The lactation milk yield of the genotypes was: *BB* 1560.3 ± 326.7, *AB* 1278.1 ± 111.3, and *AA* 1060.9 ± 85.6 ( $p < 0.05$ ). In a similar study on Egyptian buffaloes, it was found that LSM of genotypes *AB* 1632.62 ± 67.66 and *AA* 1412.63 ±

116.52 were significant for milk yield [16]. The results of the present study indicate that the frequency of the *B* allele in this herd is low. This suggests that selection to increase the frequency of the *B* allele could lead to an improvement in milk yield.

Previous studies have reported that variations in the CSN3 gene affect milk composition and cheese traits in buffaloes [8, 9, 11–13]. When the mean values of milk components of CSN3 genotypes were compared in the present study, it was found that the difference between LSMs was not significant. Similar results were found in a study of Egyptian buffaloes in which the composition of milk was analyzed by fat, lactose, total dry matter, nonfat dry matter, ash, and humidity [16].

In buffalo breeding, the desired level of performance can be achieved faster if marker-assisted selection methods are used in addition to classical breeding methods. Therefore, it is important to generalize molecular genetic methods and investigate mutations in genes that affect yield. Using a previously defined variation in the CSN3 gene, which is closely associated with milk yield traits. If other mutations in the CSN3 gene are also studied, it will be easier to evaluate the effects of this variation (135<sup>lleATC</sup>/136<sup>ThrACT</sup>) on milk yield. In view of this, the results of this study will make an important contribution to ongoing breeding projects aimed at improving milk yield traits in Anatolian buffaloes.

#### Acknowledgments

This study was supported by the Turkish Ministry of Agriculture/General Directorate of Agricultural Research and Policy as a substudy of the Anatolian Buffalo Breeding project (project no: TAGEM/HAYSUD/97/09/02/01).

#### Conflict of interest

The authors declare that they have no competing interests.

#### References

- Borghese A. Buffalo Production and Research. FAO Ed. REU Technical Series 2005; 67: 1-315.
- Soysal, M.I. Anatolian water buffaloes husbandry in Turkey. Buffalo Bulletin 2013; 32: 293-309.
- Pawar HN, Kumar R, Narang R. Effect of Year, Season and Parity on Milk Production Traits in Murrah Buffaloes. Journal of Buffalo Science 2012; 1: 122-125. <https://doi.org/10.6000/1927-520X.2012.01.01.22>
- Iannuzzi L, Di Meo GP, Perucatti A, Schibler L, Incarnato D et al. The River Buffalo (*Bubalus bubalis*, 2n = 50) Cytogenetic Map: Assignment of 64 Loci by Fluorescence in situ Hybridization and R-banding. Cytogenetics Genome Research 2003; 102: 65-75. <https://doi.org/10.1159/000075727>
- Mahmoud KGhM, Nawito MF, Dayem AMH. Sire selection for milk production traits with special emphasis on kappa casein (CSN3) gene. Global Journal of Molecular Science 2009; 5: 68-73.
- Fan X, Zhang Z, Qiu L, Zhang Y, Miao Y. Polymorphisms of the kappa casein (CSN3) gene and inference of its variants in water buffalo (*Bubalus bubalis*). Archives Animal Breeding 2019; 62 (2): 585. <https://doi.org/10.5194/aab-62-585-2019>
- El Nahas SM, Bibars MA, Taha DA. Genetic characterization of Egyptian buffalo CSN3 gene. Journal of Genetic Engineering and Biotechnology 2013; 11: 123-127. <https://doi.org/10.1016/j.jgeb.2013.08.003>

8. Gangaraj DR, Shetty S, Govindaiah MG, Nagaraja CS, Byregowda SM et al. Molecular characterization of kappa-casein gene in buffaloes. *Science Asia* 2008; 34: 435-439. <https://doi.org/10.2306/scienceasia1513-1874.2008.34.435>
9. Gouda EM, Galal MK, Abdelaziz SA. Genetic variants and allele frequencies of kappa casein in Egyptian cattle and buffalo using PCR-RFLP. *Journal of Agricultural Science* 2013; 5 (2): 197-203. <https://doi.org/10.5539/jas.v5n2p197>
10. Farrell HM, Jimenez Flores R, Bleck GT, Brown EM, Butler JE et al. Nomenclature of the Proteins of Cows' Milk—Sixth Revision. *Journal of Dairy Science* 2004; 87: 1641-1674. [https://doi.org/10.3168/jds.S0022-0302\(04\)73319-6](https://doi.org/10.3168/jds.S0022-0302(04)73319-6)
11. Beneduci B, Krastanov I, Maretto F, Oblakov N, Cassandro M. Molecular characterization of k-casein allelic variants in Bulgarian buffalo breed. *Acta Agraria Kaposváriensis* 2010; 14: 169-172.
12. Bonfatti V, Giantin M, Gervaso M, Coletta A, Dacasto M et al. Effect of CSN1S1-CSN3 ( $\alpha$ S1- $\kappa$ -casein) composite genotype on milk production traits and milk coagulation properties in Mediterranean water buffalo. *Journal of Dairy Science* 2012; 95: 3435-3443. <https://doi.org/10.3168/jds.2011-4901>
13. Bonfatti V, Gervaso M, Rostellato R, Coletta A, Carnier P. Protein composition affects variation in coagulation properties of buffalo milk. *Journal of Dairy Science* 2013; 96: 4182-4190. <https://doi.org/10.3168/jds.2012-6333>
14. Das P, Jain S, Tiwari G, Garg LC. Rapid communication: nucleotide sequence of the river buffalo kappa-casein cDNA. *Journal of Animal Science* 2000; 78: 1389. <https://doi.org/10.2527/2000.7851389x>
15. El Nahas SM, Mossallam AAA. *AcuI* identifies water buffalo CSN3 genotypes by RFLP analysis. *Journal of Genetics* 2014; 93: 94-96. <https://doi.org/10.1007/s12041-014-0427-3>
16. Al-Shawa ZM, El-Zarei MF, Ghazy AA, Amin MS, Ayoub MA et al. Genetic Profile of  $\kappa$ -Casein Gene Based on RFLP Technique in Association with Milk Traits in Egyptian Buffaloes. *Journal of Animal, Poultry & Fish Production* 2019; 8 (1): 9-20.
17. Al-Shawa ZM, El-Zarei MF, Ghazy AA, Ayoub MA, Merdan SM et al. Polymorphism, Allelic and Genotypic frequencies of  $\kappa$ -Casein and  $\beta$ -LG genes in Egyptian Buffaloes. *Journal of Agricultural Science* 2020; 12 (4): 283-297. <https://doi.org/10.5539/jas.v12n4p283>
18. Otaviano AR, Tonhati H, Desiderio SJA, Munoz MFC. Kappa-casein gene study with molecular marker in female buffalos. *Genetics and Molecular Biology* 2005; 28(2): 237-241. <https://doi.org/10.1590/S1415-47572005000200010>
19. Tekerli M, Altuntaş A, Birdane F, Sarımeçmetoğlu O, Doğan İ et al. Comparative Determination of Breeding Possibilities in Terms of Yield Traits, Body Sizes and Biochemical Polymorphism in a Herd of Anatolian Buffalo from Different Regions: Lactation Traits and Genetic Polymorphism. *Lalahan Livestock Research Institute Journal* 2016; 56 (1): 7-12.
20. Cinar MU, Akyuz B, Arslan K, Ilgar EG. Genotyping of the kappa-casein and beta-lactoglobulin genes in Anatolian water buffalo by PCR-RFLP. *International Journal of Dairy Technology* 2016; 69 (2): 308-311. <https://doi.org/10.1111/1471-0307.12257>
21. Toparslan E, Mercan L. Genotyping of prolactin, kappa casein, and pituitary transcription factor 1 genes of the Anatolian water buffalo population in the Kızılırmak Delta. *Turkish Journal of Veterinary and Animal Sciences* 2019; 43: 784-790. <https://doi.org/10.3906/vet-1907-36>
22. Özşensoy Y. Assessment of polymorphism on kappa-casein gene of Anatolian water buffalo breed using the PCR-RFLP method. *Turkish Journal of Veterinary & Animal Sciences* 2020; 44: 904-909. <https://doi.org/10.3906/vet-2001-3>
23. Abbasi B, Fayazi J, Beigi Nasiri MT, Roshanfekar HA et al. Analysis of Kappa Casein Gene Polymorphism by PCR-RFLP in Buffalo Population in Khuzestan Province, *Research Journal of Biological Sciences* 2009; 4 (10) :1073-1075.
24. Riaz MN, Malik NA, Nasreen F, Qureshi JA. Molecular marker assisted study of kappa-casein gene in Nili-Ravi (buffalo) breed of Pakistan. *Pakistan Veterinary Journal* 2008; 28: 103-106.
25. Raj GD, Shetty S, Govindaiah MG, Nagaraja CS, Byregowda SM et al. Molecular characterization of Kappa-casein in buffaloes. *Science Asia* 2008; 34: 435-549. <https://doi.org/10.2306/scienceasia1513-1874.2008.34.435>
26. Patel RK, Chauhan JB, Singh KM, Soni KJ. Genotype and allele frequencies of K-casein and B-lactoglobulin in Indian river buffalo bulls (*Bubalus bubalis*). *Buffalo Bulletin* 2007; 26 (3): 63-66.
27. Yeh FC, Yang RTJ, Xiyan JM. PopGene32. Microsoft window-based freeware for population genetic analysis, Version 1.32 (Software); University of Alberta: Edmonton, AB, Canada: 2000.
28. Minitab I: Statistical software for windows, release 17. Minitab Inc., USA, 2014.
29. Antonopoulos D, Vougiouklaki D, Laliotis GP, Tsironi T, Valasi I et al. Identification of Polymorphisms of the CSN2 Gene Encoding  $\beta$ -Casein in Greek Local Breeds of Cattle. *Veterinary Sciences* 2021; 8 (11): 257. <https://doi.org/10.3390/vetsci8110257>